

MAIN ATTRACTIONS

- Huge collection of working engines
- Largest working steam engine in Cheshire
- Displays of vintage memorabilia
- Local history display
- Craft demonstrations*
- Working workshops./ demos*
- Tea room / Souvenir shop
- Large scale model of Poynton circa 1900
- Meeting room / Cinema
- Free car park • Free wifi
- Wheelchair and scooter available, good access throughout
- Volunteers waiting to share their knowledge of exhibits.

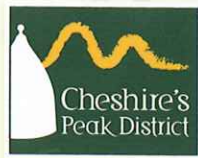
*Craft Demonstrations and Workshops on all our Events Days, (otherwise throughout the season when manned by volunteers).

Join our Friends Association

LOOKING FOR FREE ADMISSION TO ALL OUR EVENTS? VISIT OUR WEBSITE FOR ALL THE DETAILS.

www.enginemuseum.org
pre-booked group visits welcome

NORMAL OPEN TIMES 10am - 4:30pm.
Open Friday, Saturday and Sunday between
Sunday 27th March to 30th October.



MAN Truck & Bus are proud to support the Anson Engine Museum

THE MUSEUM IS OPEN EVERY FRIDAY,
SATURDAY AND SUNDAY FROM EASTER
SUNDAY TO END OF OCTOBER 2016

10am - 4:30pm

We recommend a visit of at least 2 hours. Last entry 3:30pm

For a full programme of events and exhibitions visit

www.enginemuseum.org

ADULTS £6.75

SENIOR CONCESSIONS £6.25

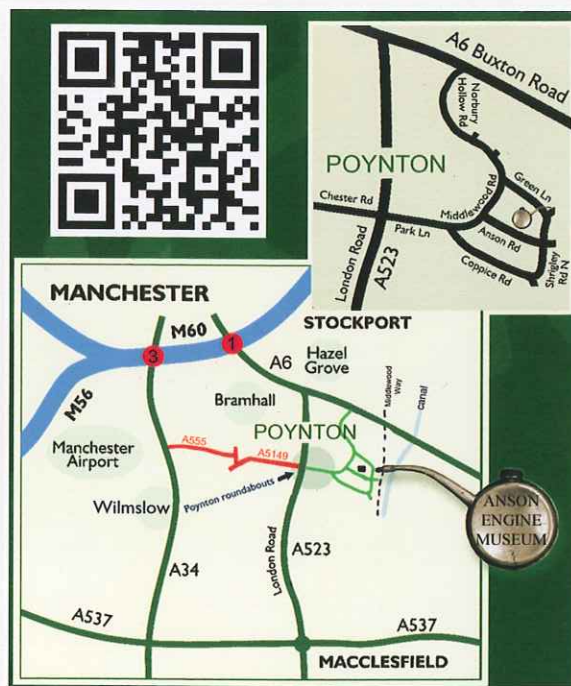
Children 13~16 £2.50 Children under 12 free

FRIENDS OF THE MUSEUM free

GROUP VISITS prices on request

The number of engines running may vary

(If no engines are running a reduced entry fee will apply)



By car: Approx 7 miles from Junction 1 and 9 miles from junction 3 of M60. Follow brown tourist signs from Poynton roundabouts. **By bus:** Take the P1 from Hazel Grove to the Boars Head Higher Poynton, then a 10 minutes walk down Anson Road to the museum. **Train station:** Middlewood 1.3 miles Poynton 2 miles. **By Canal:** From bridge no.15. **Walk:** 15 minute from the Middlewood Way and Macclesfield Canal.

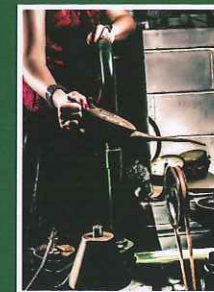


Anson Road, Poynton, Cheshire
SK12 1TD | T 01625 874426

anson museum



- HUGE COLLECTION OF WORKING ENGINES
- POYNTON LOCAL HISTORY EXHIBITS



THE ENGINES THAT CHANGED THE WORLD
GAS | OIL | PETROL | DIESEL | STEAM

Our 2016 **Special Events Days**
when many of our engines will be running.



MARCH

27th 28th Opening weekend
Easter Sunday & Monday
Steam engines running and craft demonstrations.

MAY

1st 2nd **Bank Holiday Sunday & Monday**
Stott steam engine running & craft demos.
30th **Bank holiday Monday**
Steam engines running and craft demonstrations.

JUNE

12th **Early Fathers Day event**
Steam engines running and craft demonstrations.
18th **Evening trip from the 1,000 Engine Rally**
at Astle Park.
29th **Midsummer Mingle.** Open 2pm to 9pm

JULY

24th Steam engines running and craft demonstrations.

AUGUST

28th 29th **Bank Holiday Sunday & Monday**
Stott steam engines running and craft demonstrations.

SEPTEMBER

25th Steam engines running and craft demonstrations.

OCTOBER

29th 30th **Step back in time - turn back the clocks**
(closing weekend). Steam engines running
and craft demonstrations.

SEE, HEAR AND FEEL THE POWER OF ENGINES



Discover the power of the past
As featured on TV, this multi-award winning museum in the Cheshire Peak District has a great deal to offer visitors. Recognised as one of the countries leading specialist museums, housing some of the worlds rarest engines.



Fuelled by enthusiasm and staffed by volunteers, it is a great day out for all the family. There is always something new to see, from the impressive collection of working engines and machinery, to the craft demonstrations and local history exhibitions.

